



ROADQUAKE® 2F

TPRS Service and Life Span



INSPECTION AND SERVICE LIFE

The life expectancy of RQ TPRS under normal use is measured in years. RQ TPRS nevertheless requires routine inspection and cleaning.

During the inspection, prior to use, users should inspect for gravel, mud, stones or asphalt embedded in the bottom surface of RQ TPRS. If left as is, accumulated debris could affect performance.

On extremely rare occasions, the TPRS may be damaged from an incident. Users should inspect each RQ TPRS to determine if an incident has occurred in service and has reached the end of its service life.

If you have any questions regarding the service life of the TPRS, please contact your Regional Manager or contact us at **800-662-6338**.

US Patent No. 7,736,087. Other Patents Pending

ROADQUAKE RECYCLING PROGRAM

We at PSS are committed to being good stewards of our environment. Our recycling program is essential to keeping our RoadQuake products out of our nation's landfills.

The "PSS RoadQuake Reclaim!" Program is a recycling program for RoadQuake Temporary Portable Rumble Strips (TPRS). PSS will collect users' strips that have reached the end of their service life and dispose of them in an environmentally conscious manner. Our program offers users a more environmentally friendly and convenient alternative to disposing their RQ TPRS in a landfill.

Users should routinely inspect their TPRS inventory and examine each TPRS for damage to remove those that have reached their end-of-service life.

Under our "PSS RoadQuake Reclaim!" Program, users simply:

- » Collect enough end-of-service life RQ TPRS to fill a pallet: 24 RoadQuake 2F TPRS; 36 RoadQuake 2 Modular TPRS.
- » Contact your local PSS Regional Manager.
- » Band and shrink-wrap TPRS on an acceptable pallet. Call **800-662-6338** for details.
- » Once ready for shipment, e-mail a photo of the pallet to your Regional Manager.

PSS will arrange for a return shipment to our recycling facility at no charge to the user!

Join us in this important environmental effort today! Please call us for details at **800-662-6338**.

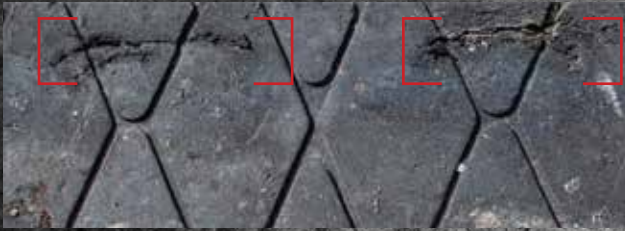
NORMAL WEAR

Type of RQ TPRS: RoadQuake 2F, bottom of strip

Type of Damage: Torn material around two iron ballast bars

Determination: Normal Wear - Serviceable

Recommended Action: Continue use.



Type of RQ TPRS: RoadQuake 2F, bottom of strip

Type of Damage: Torn tab; obsolete link

Determination: Normal Wear - Serviceable

Recommended Action: Daily inspection. Recycle if tear reduces performance of strip.



DAMAGE FROM INCIDENTS - ELIGIBLE FOR RECYCLING

Type of RQ TPRS: RoadQuake 2F, top of strip

Type of Damage: Torn material; broken ballast bar; broken handle

Determination: Incident - End of Service Life

Recommended Action: Recycle through PSS Recycle Program.



Type of RQ TPRS: RoadQuake 2F TPRS, top of strip

Type of Damage: Material torn to edge of strip

Determination: Incident - End of Service Life

Recommended Action: Recycle through PSS Recycle Program.



For more examples of wear please see the RQ BP pages 25 to 35 . If you have any questions, please call your PSS Regional Manager.

ALTERATIONS OF ROADQUAKE 2F TPRS

In an attempt to extend the service life of the TPRS, a few users have erroneously attempted to connect RoadQuake (RQ) sections with unapproved material. As you can see on the pictures on the right, the two halves of the strip are held together by wire or other material. This practice represents a serious hazard to road users and nullifies the RoadQuake warranty and recycling eligibility. The TPRS should not be altered under any circumstances.

In extraordinary circumstances the steel link, in older versions, may tear through the tabs. PSS improved RQ by replacing the steel link hinges with a Breakaway Pin design, which will extend the life of a strip.

ROADQUAKE WARRANTY

RoadQuake TPRS is warranted by PSS on a prorated basis to be free from defects in material and workmanship for three years from the date of shipment.

RECYCLING ELIGIBILITY

Please call your PSS Regional Manager or 800-662-6338 for more information on RoadQuake recycling eligibility.

